

SPRING COILING AND WIRE FORMING

EQUIPMENT SPECIFICATIONS

- AIM 100P
- AIM 100
- AIM 1000
- AIM 1500
- AIM 2000
- AIM 2500
- AIM 3000
- AIM 4000



AIM AUTOMATED
INDUSTRIAL
MOTION

5627 Airline Rd, Fruitport, MI 49415 1.800.933.0404 | 231.865.1800 | www.aimcoil.com

AIM 100P

Equipment Features

Max. Wire Size (in)	0.039
Min. Wire Size (in)	0.006
Cycle Rate	Up to 45 PPM
Coil Diameter Range	3 index to 1.0"
Shop Air	80 psi
Power	110 VAC, 24 VDC

- Control interface: pneumatic
- Dimensions (in): L30xW24xH60
- Gross Weight (lbs): 275



AIM 100

Equipment Features

Feed Speed (in/sec)	135
Max. Wire Size (in)	0.032
Min. Wire Size (in)	0.006
Feed Length	Unlimited
Coil Diameter Range	3 Index to 1.0"
Power (3 phase)	240 Volt

- Control interface: Windows-based CNC
- Dimensions (in): L30xW24xH60
- Gross Weight (lbs): 1,700



AIM 1000

Equipment Features

Feed Speed (in/sec)	100
Max. Wire Size (in)	0.080
Min. Wire Size (in)	0.018
Feed Length	Unlimited
Coil Diameter Range	3 Index to 1.75"
Power (3 phase)	240 Volt

- Control interface: Windows-based CNC
- Dimensions (in): L36xW28xH60
- Gross Weight (lbs): 3,400



AIM 1500

Equipment Features

Feed Speed (in/sec)	85
Max. Wire Size (in)	0.135
Min. Wire Size (in)	0.032
Feed Length	Unlimited
Coil Diameter Range	3 Index to 2.5"
Power (3 phase)	240 Volt

- Control interface: Windows-based CNC
- Dimensions (in): L60xW36xH72
- Gross Weight (lbs): 5,200



AIM 2000

Equipment Features

Feed Speed (in/sec)	85
Max. Wire Size (in)	0.180
Min. Wire Size (in)	0.047
Feed Length	Unlimited
Coil Diameter Range	3 Index to 3"
Power (3 phase)	480 Volt

- Control interface: Windows-based CNC
- Dimensions (in): L68xW40xH72
- Gross Weight (lbs): 6,700



AIM 2500

Equipment Features

Feed Speed (in/sec)	75
Max. Wire Size (in)	0.250
Min. Wire Size (in)	0.080
Feed Length	Unlimited
Coil Diameter Range	3 Index to 4"
Power (3 phase)	480 Volt

- Control interface: Windows-based CNC
- Dimensions (in): L84xW60xH72
- Gross Weight (lbs): 12,800



AIM 3000

Equipment Features

Feed Speed (in/sec)	60
Max. Wire Size (in)	0.375
Min. Wire Size (in)	0.125
Feed Length	Unlimited
Coil Diameter Range	3 Index to 6"
Power (3 phase)	480 Volt

- Control interface: Windows-based CNC
- Dimensions (in): L84xW60xH72
- Gross Weight (lbs): 18,500



AIM 4000

Equipment Features

Feed Speed (in/sec)	60
Max. Wire Size (in)	0.787
Min. Wire Size (in)	0.250
Feed Length	Unlimited
Coil Diameter Range	5 Index to 10"
Power (3 phase)	480 Volt

- Control interface: Windows-based CNC
- Dimensions (in): L108xW96xH96
- Gross Weight (lbs): 78,000





USER-FRIENDLY MACHINE CONTROLS

- Windows-based software
- Industrial touchscreen
- Hand jog wheel
- Programmable I/O for interfacing with PLCs and auxiliary equipment



BUILT-IN PROGRAMMING TOOLS

- Machine and part home sequences
- On-the-fly tool adjustments
- Total parts, part countdown and lbs of material required
- English and Metric Options

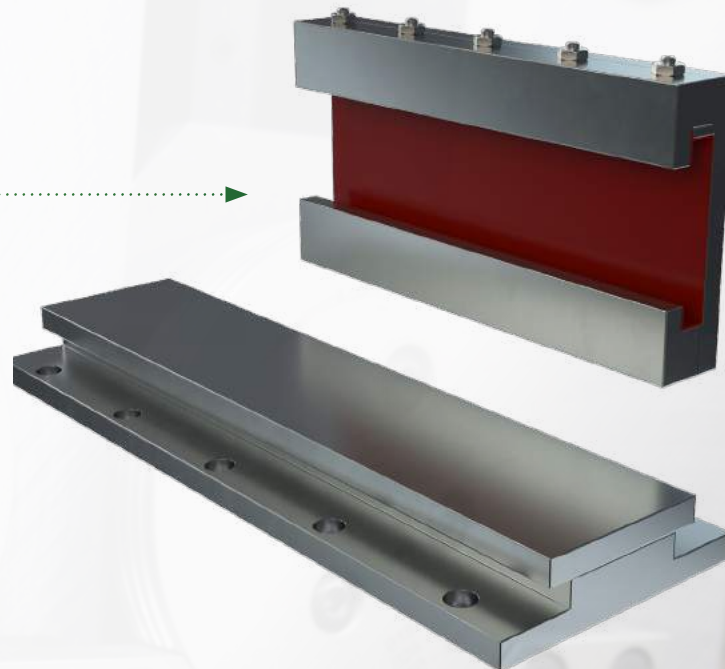


<div> New Open Save Save As Delete </div>											
<div> General Offsets Program Gauge Adjust Run Data I/O Alarms (0) Position Velocity Torque </div>											
<div> Update Add Step Insert Step Delete Step </div>											
<div> <div>Total Feed Length</div> <div>15 in</div> <div>in</div> </div>											
	Feed	Pitch	Diameter	Torsion	Point	Cut	Wait(ms)	Accel(ms)	Speed	Option	Output
1	1.0000							50	100.0		front end closed coil
2	0.5000	0.0800	0.0200		0.0050			50	100.0		transition to open coil
3	12.0000	0.0800	0.0200		0.0050			50	100.0		open coil body
4	0.5000							50	100.0		transition to closed coil
5	1.0000							50	100.0		back end closed coil



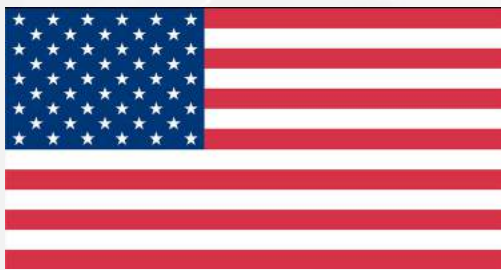
MECHANICAL COMPONENTS

- High precision **DuraBond Slides** on all axes
- Low inertia, high torque AC brushless servo motors on all axes
- In-line planetary gear reducers on feed and cutter axes
- Unique servo cut design provides maximum cutting force
- Precision linear actuators on all tooling axes
- Square tooling chucks for precise location
- Separate clamp on chuck and arbor
- True X-Y-Z linear motion
- Accepts industry standard tooling – prints available

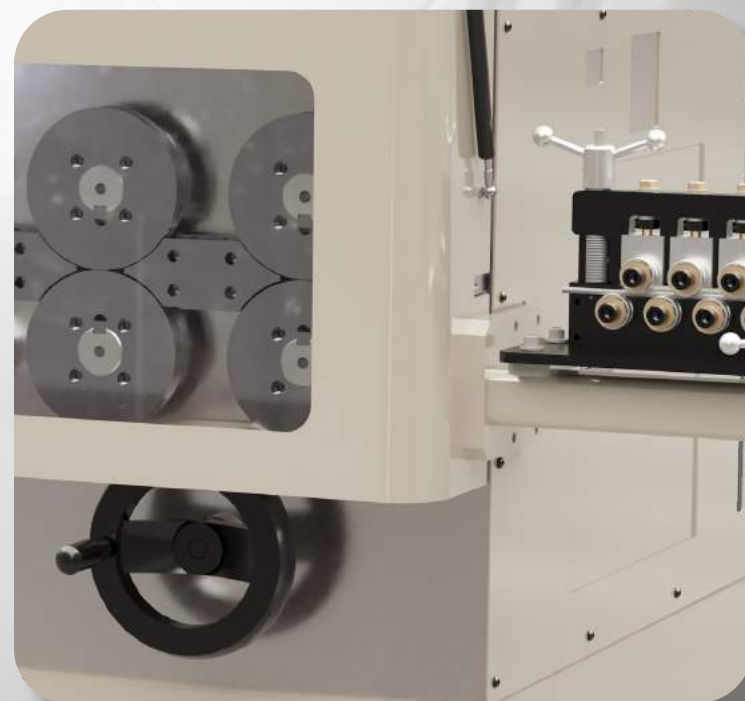


PRODUCTION ADVANTAGES

- Speeds up to 60,000 parts/hour
- Changeover times in less than 5 minutes
- Robust and reliable
- Turn-key systems and solutions are our specialty
- Custom machine designs available
- Privately owned and operated since 1985



**ALL AIM COILING MACHINES
ARE DESIGNED, BUILT
AND SERVICED
IN THE USA**





**SPRING COILING AND WIRE FORMING
EQUIPMENT SPECIFICATIONS**

5627 Airline Rd, Fruitport, MI 49415
1.800.933.0404 | 231.865.1800
www.aimcoil.com