

SPRING COILING AND WIRE FORMING

EQUIPMENT SPECIFICATIONS

- AIM 100P
- AIM 100
- AIM 1000
- AIM 1500
- AIM 2000
- AIM 2500
- AIM 3000
- AIM 4000



AIM AUTOMATED
INDUSTRIAL
MOTION

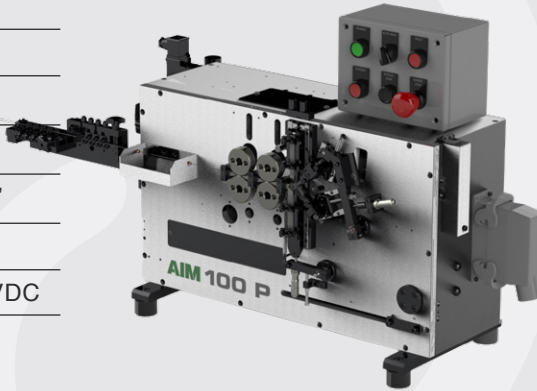
5627 Airline Rd, Fruitport, MI 49415 1.800.933.0404 | 231.865.1800 | www.aimcoil.com

AIM 100P

Equipment Features

Max. Wire Size (in)	0.039
Min. Wire Size (in)	0.006
Cycle Rate	Up to 45 PPM
Coil Diameter Range	3 index to 1.0"
Shop Air	80 psi
Power	110 VAC, 24 VDC

- Control interface: pneumatic
- Dimensions (in): L30xW24xH60
- Gross Weight (lbs): 1,950



AIM 100

Equipment Features

Feed Speed (in/sec)	135
Max. Wire Size (in)	0.032
Min. Wire Size (in)	0.006
Feed Length	Unlimited
Coil Diameter Range	3 Index to 1.0"
Power (3 phase)	240 Volt

- Control interface: Windows-based CNC
- Dimensions (in): L30xW24xH60
- Gross Weight (lbs): 1,950



AIM 1000

Equipment Features

Feed Speed (in/sec)	100
Max. Wire Size (in)	0.080
Min. Wire Size (in)	0.018
Feed Length	Unlimited
Coil Diameter Range	3 Index to 1.75"
Power (3 phase)	240 Volt

- Control interface: Windows-based CNC
- Dimensions (in): L36xW28xH60
- Gross Weight (lbs): 2,700

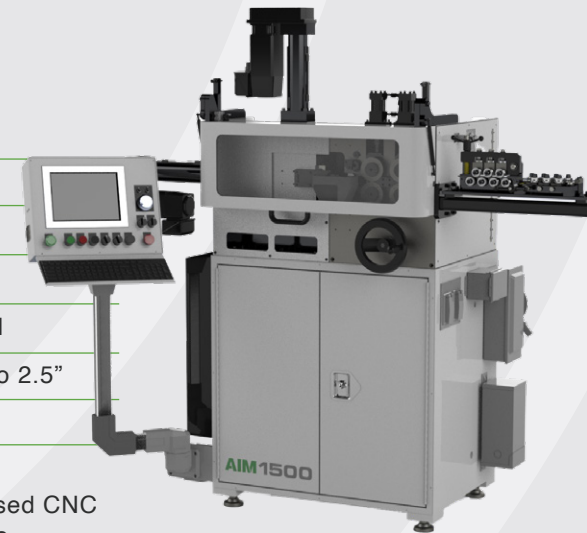


AIM 1500

Equipment Features

Feed Speed (in/sec)	85
Max. Wire Size (in)	0.135
Min. Wire Size (in)	0.032
Feed Length	Unlimited
Coil Diameter Range	3 Index to 2.5"
Power (3 phase)	240 Volt

- Control interface: Windows-based CNC
- Dimensions (in): L60xW36xH72
- Gross Weight (lbs): 4,500



AIM 2000

Equipment Features

Feed Speed (in/sec)	85
Max. Wire Size (in)	0.180
Min. Wire Size (in)	0.047
Feed Length	Unlimited
Coil Diameter Range	3 Index to 3"
Power (3 phase)	480 Volt

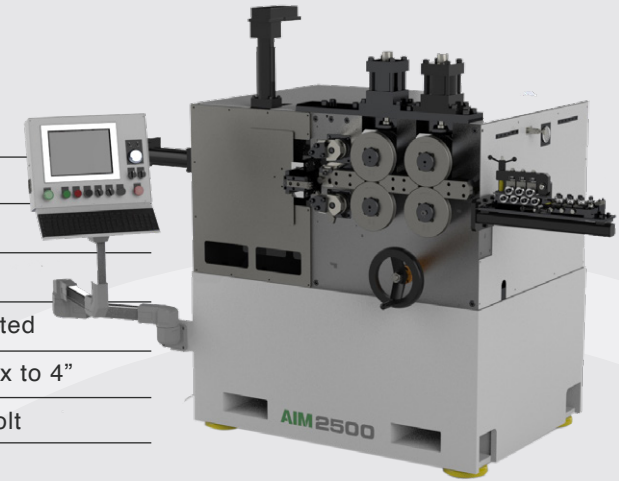


- Control interface: Windows-based CNC
- Dimensions (in): L68xW40xH72
- Gross Weight (lbs): 6,700

AIM 2500

Equipment Features

Feed Speed (in/sec)	75
Max. Wire Size (in)	0.250
Min. Wire Size (in)	0.080
Feed Length	Unlimited
Coil Diameter Range	3 Index to 4"
Power (3 phase)	480 Volt



- Control interface: Windows-based CNC
- Dimensions (in): L84xW60xH72
- Gross Weight (lbs): 11,000

AIM 3000

Equipment Features

Feed Speed (in/sec)	60
Max. Wire Size (in)	0.375
Min. Wire Size (in)	0.125
Feed Length	Unlimited
Coil Diameter Range	3 Index to 6"
Power (3 phase)	480 Volt



- Control interface: Windows-based CNC
- Dimensions (in): L84xW60xH72
- Gross Weight (lbs): 16,000

AIM 4000

Equipment Features

Feed Speed (in/sec)	60
Max. Wire Size (in)	0.787
Min. Wire Size (in)	0.250
Feed Length	Unlimited
Coil Diameter Range	5 Index to 10"
Power (3 phase)	480 Volt



- Control interface: Windows-based CNC
- Dimensions (in): L108xW96xH96
- Gross Weight (lbs): 75,000



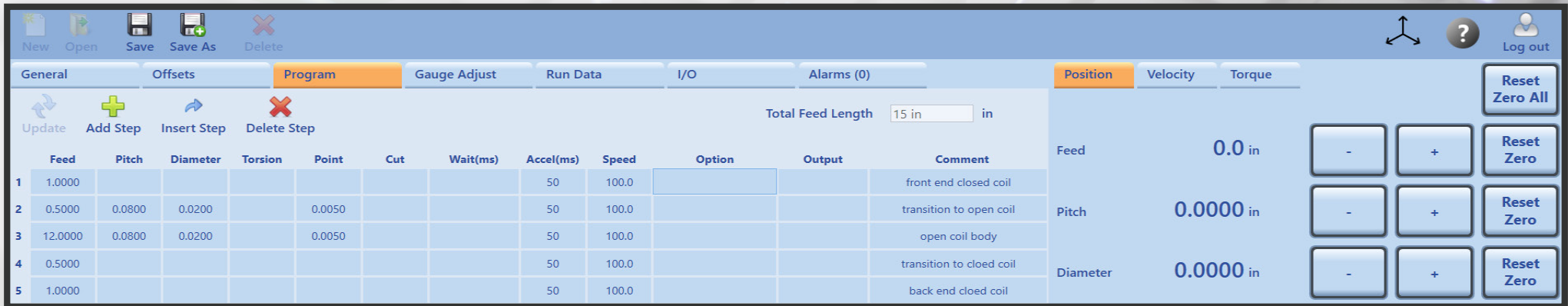
USER-FRIENDLY MACHINE CONTROLS

- Windows-based software
- Industrial touchscreen
- Hand jog wheel
- Programmable I/O for interfacing with PLCs and auxiliary equipment



BUILT-IN PROGRAMMING TOOLS

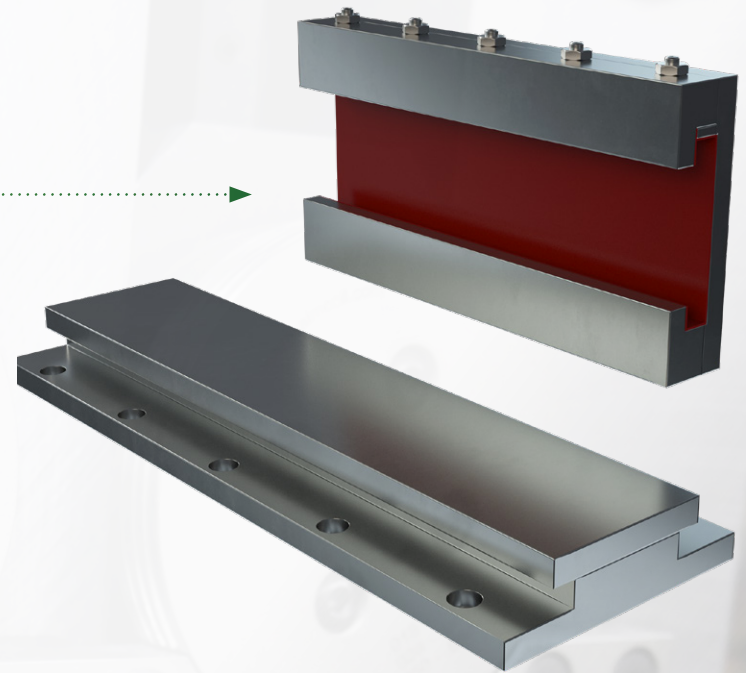
- Machine and part home sequences
- On-the-fly tool adjustments
- Total parts, part countdown and lbs of material required
- English and Metric Options





MECHANICAL COMPONENTS

- High precision **DuraBond Slides** on all axes
- Low inertia, high torque AC brushless servo motors on all axes
- In-line planetary gear reducers on feed and cutter axes
- Unique servo cut design provides maximum cutting force
- Precision linear actuators on all tooling axes
- Square tooling chucks for precise location
- Separate clamp on chuck and arbor
- True X-Y-Z linear motion
- Accepts industry standard tooling – prints available

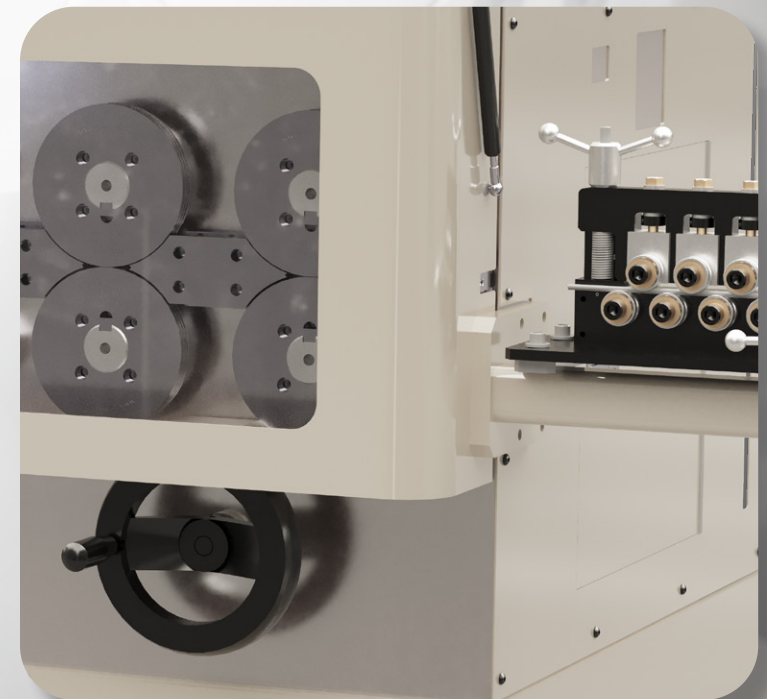


PRODUCTION ADVANTAGES

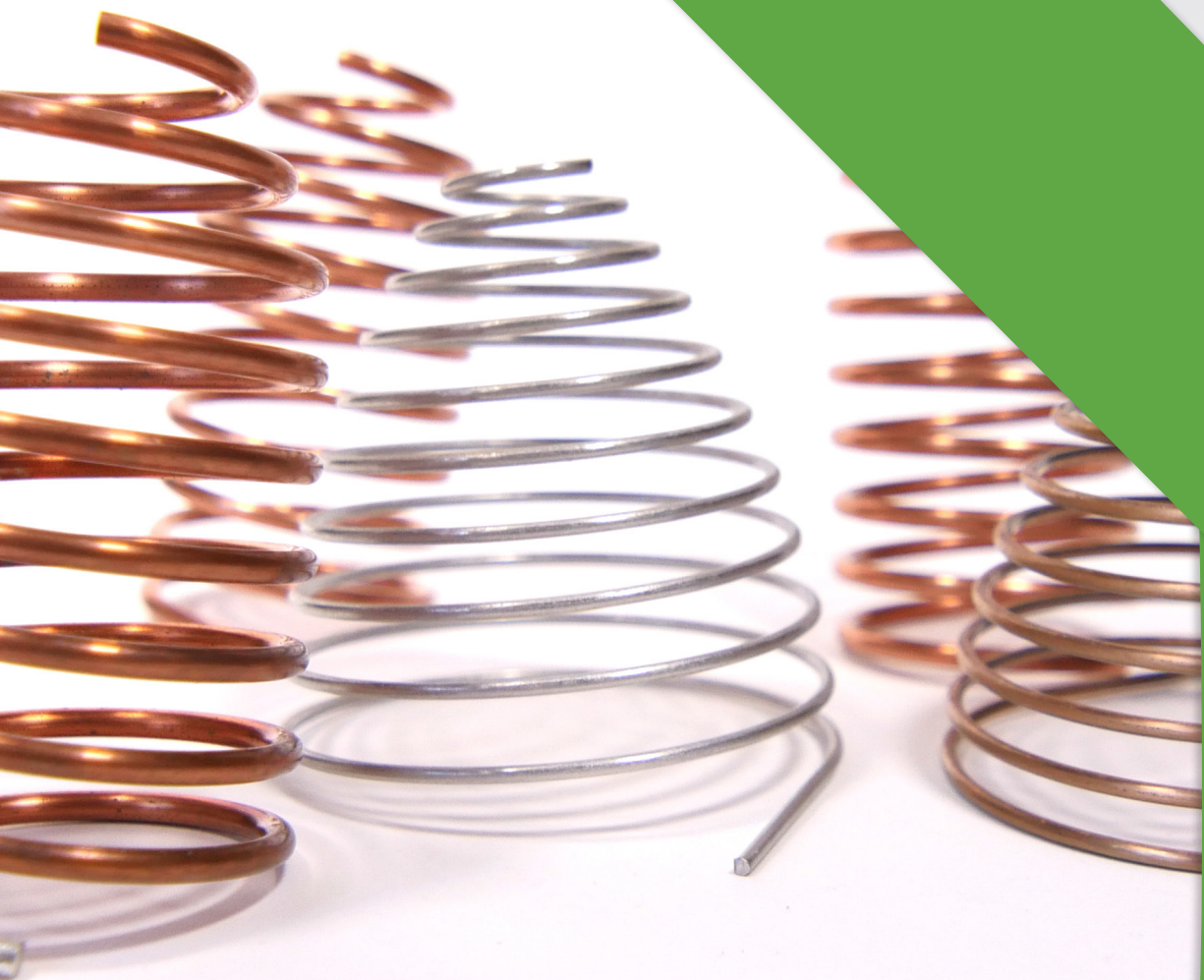
- Speeds up to 60,000 parts/hour
- Changeover times in less than 5 minutes
- Robust and reliable
- Turn-key systems and solutions are our specialty
- Custom machine designs available
- Privately owned and operated since 1985



**ALL AIM COILING MACHINES
ARE DESIGNED, BUILT
AND SERVICED
IN THE USA**



AIM AUTOMATED
INDUSTRIAL
MOTION



**SPRING COILING AND WIRE FORMING
EQUIPMENT SPECIFICATIONS**

5627 Airline Rd, Fruitport, MI 49415
1.800.933.0404 | 231.865.1800
www.aimcoil.com